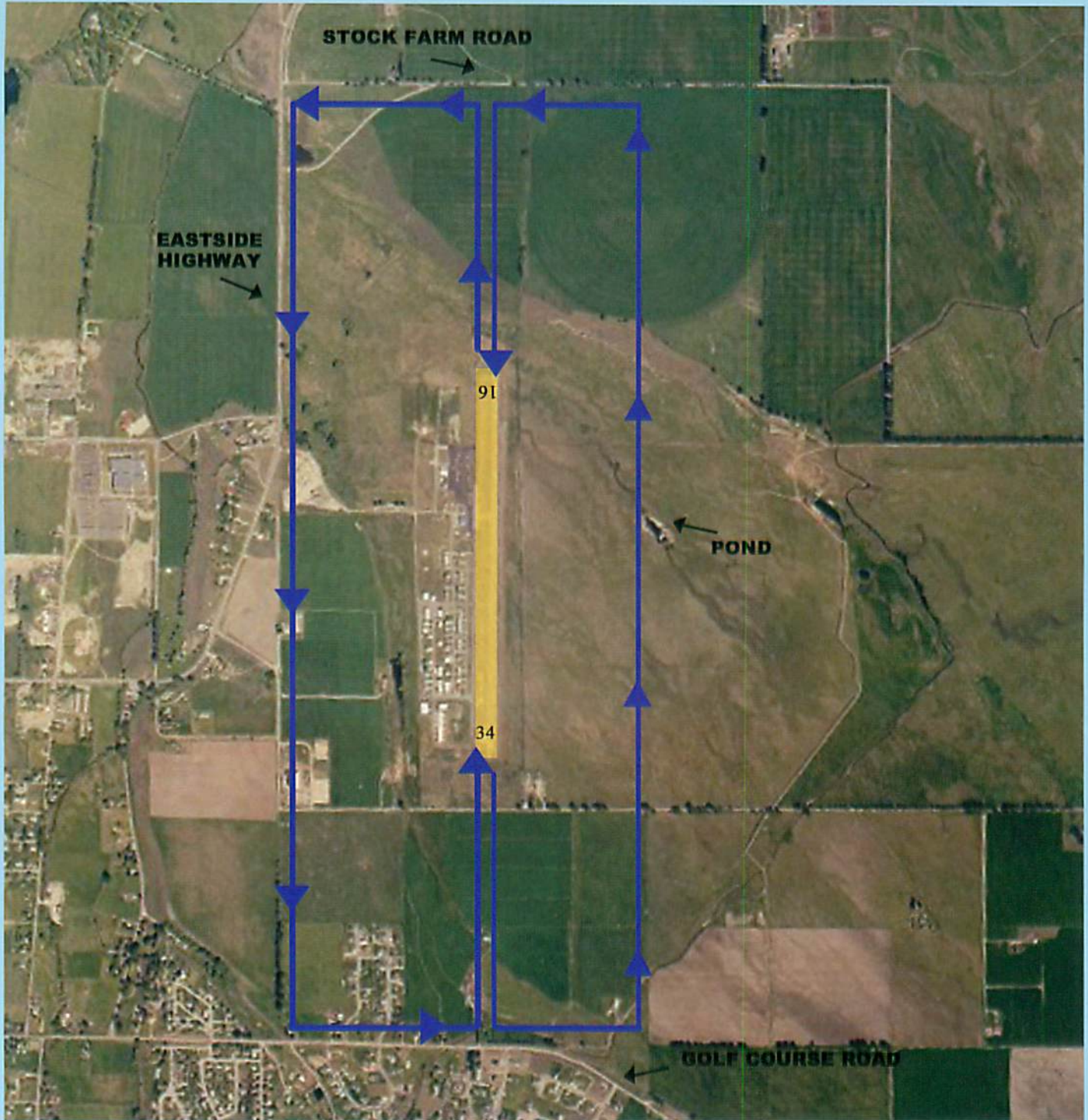


# Traffic Pattern Noise Abatement Procedures for General Aviation Aircraft for Ravalli County Airport



All pilots are encouraged to use the following noise abatement procedures. As pilots we have an obligation to fly safely and with as little noise impact on our neighbors as possible. By using your aircraft's quietest departure techniques, keeping RPM and power setting as low as possible on arrivals, and flying the "noise abatement" traffic patterns we can achieve that goal. Preferred no wind runway is 16.

Traffic Pattern Altitude (TPA) is 800 AGL for all single engine aircraft with left hand traffic patterns.

Departure: Use best rate of climb speed (VY) to attain pattern altitude as soon as possible.

RWY 34 / Downwind: Remain over or inside of the Eastside Highway  
Base: Remain inside Golf Course Road  
Cross Wind: Remain inside Stock Farm Road

RWY 16 / Downwind: Remain inside or over the pond.  
Base: Remain inside the Stock Farm Road.  
Cross Wind: Remain inside Golf Course Road.

Request heavy and turbine aircraft make an immediate climbing turn to the east on departure from RWY 16 or 34.